

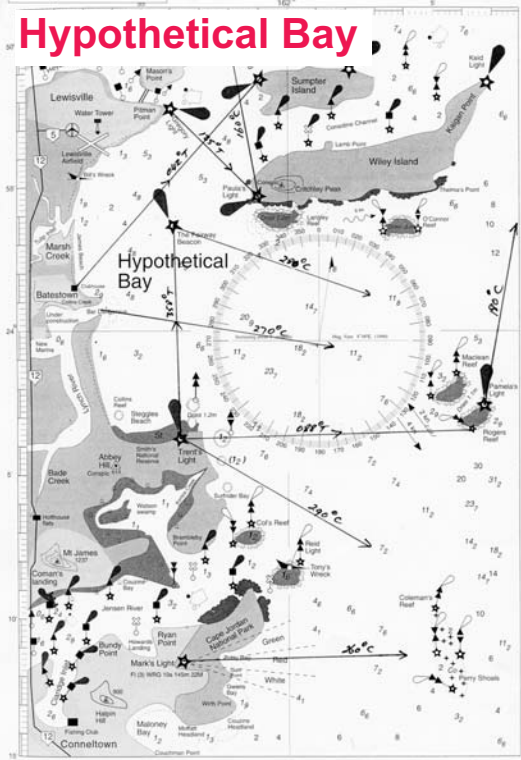
Navigation workbook suggested answers

TG106

SAMPLE PAGES

Activity 16 Chart answers

Hypothetical Bay



Activity 16 Compass courses - page 48

- 135°T
 - 088°T
 - 358°T
 - 042°T
- See chart opposite
- Variation (2008)

= Variation (1990) + (annual increase x number of years passed)

= 8°00'E + (2' x 18)

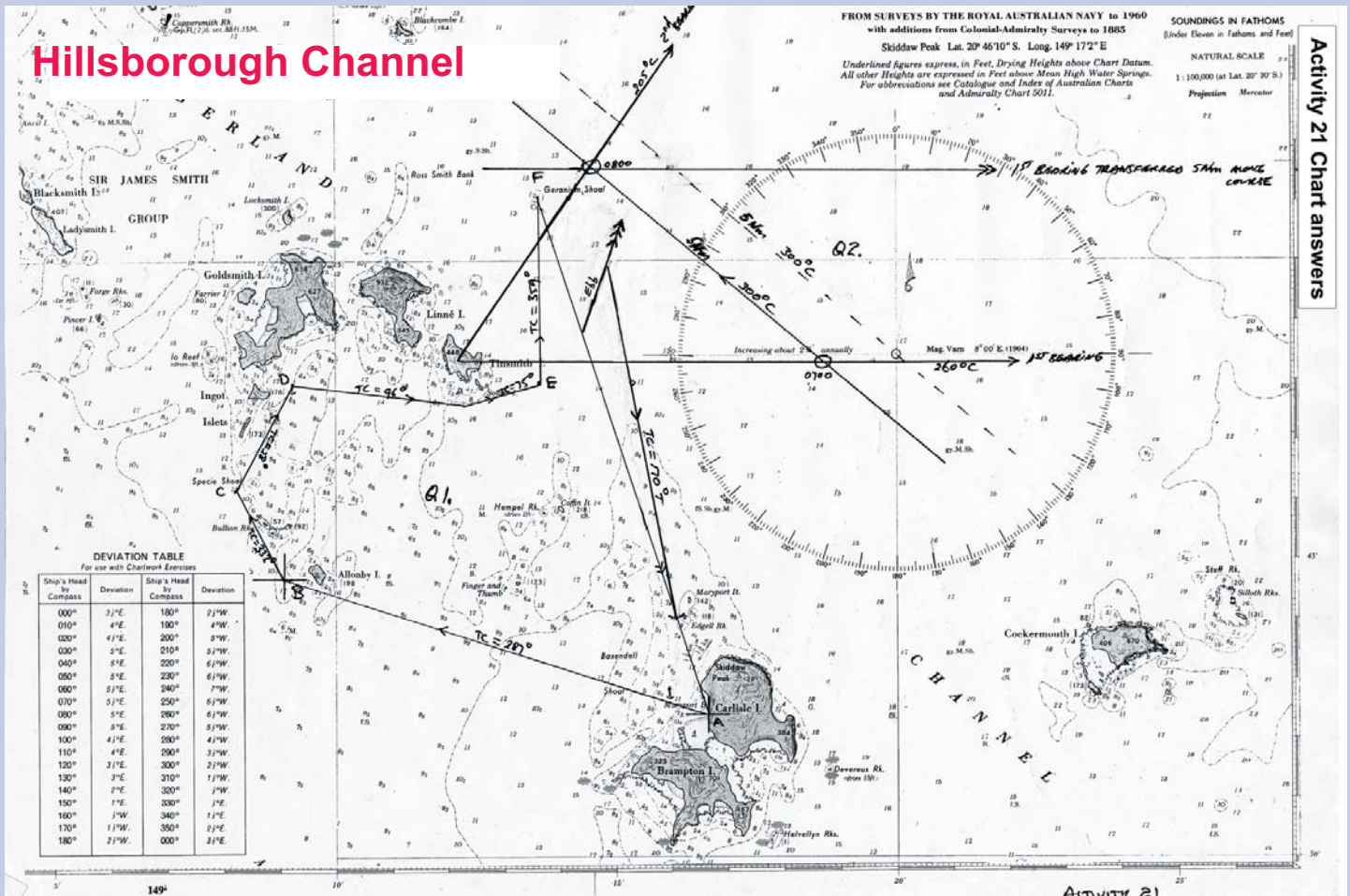
= 8°00'E + 36'

= 8°36'E ~ 9°E to nearest degree.



| | True | Variation | Compass |
|--|------|-----------|---------|
| a) Fairway Beacon to Gregory Light | 358° | 9°E | 349° |
| b) Gregory Light to Rickard Light | 070° | 9°E | 061° |
| c) Batestown C'house to Nth tip Maclean Reef | 103° | 9°E | 094° |
| d) Pamela's Light to Keid Light | 001° | 9°E | 352° |
| e) Keid Light to Hamlyn Light | 275° | 9°E | 266° |

Hillsborough Channel



Activity 21 Chart answers

Activity 21